



OFFICER REPORT TO EXECUTIVE

DEVELOPING CHILDREN'S CENTRES IN SURREY – 2006 to 2008 - UPDATE 20 JUNE 2006

KEY ISSUES / DECISION:

1. This is an update on the progress of the strategy to develop Children's Centres as requested by the Executive at the meeting of 23 January 2006. The report provides information on progress to date and the plans for the next phase of the programme. It is recommended that the Executive:
 - notes the measures that have been put in place for taking forward this programme
 - supports the action that is being taken to discuss a range of options with the DfES SureStart regional team.
 - agrees for the Early Years and Childcare Service and Strategy Group to continue taking the programme forward in line with the strategic plan to create the 46 Children's Centres across the County, to ensure that the given timescales and deadlines are met.

In recognition of the changes to the membership of the Executive, the next section is taken from the initial Executive paper and contains background information for new Executive Members. The paper also contains comments from the Children and Families Select Committee.

The Strategic Drivers

2. Choice for Parents, The Best Start for Children: A Ten Year Strategy For Childcare, published in December 2004 set out the Government's strategy to ensure that:
 - every child has the best possible start in life
 - all parents, especially mothers, can take up opportunities for work (including training for employment)
 - families are better able to take control of the choices they make in balancing work and family life
3. Local Authorities will have a duty to improve the well being of all young children and to reduce inequalities between those achieving the poorest outcomes and the rest; this relates to the five Every Child Matters Outcomes of being healthy, staying safe,

enjoying and achieving, making a positive contribution and achieving economic well being.

4. There will be a requirement to deliver improved outcomes by ensuring that early childhood services are delivered in an integrated way, facilitating access to services and maximising the benefits to children, parents and prospective parents. Early Childhood Services – comprise:
 - early years provision, i.e. integrated early education and childcare
 - family support services relating to young children, e.g. supervised contact and early intervention for families identified as needing support
 - health services relevant to young children and their parents, e.g. health visitors, ante-natal and post-natal care
 - services provided under the Employment and Training Act 1973 assisting or encouraging parents (and prospective parents) to obtain or retain employment, as delivered through Jobcentre Plus
 - information services for parents
5. In line with Surrey's target, the strategic direction to create 46 Children's Centres across the County by the end of March 2008 will support and ensure the delivery of the above agenda.

BUSINESS CASE:

What we are trying to achieve

6. To identify and create 46 appropriate geographically placed Phase Two Children's Centres across the County.

To encourage private providers, schools and other agencies to work collaboratively with parents and carers to meet the learning, health and social needs of children, as well as by ensuring a strategic approach with School Confederations and Extended Schools.

To increase the life chances of Surrey children who are disadvantaged by their social, economic, geographical and family circumstances through providing enriched early intervention programmes with a proven effectiveness.

Progress to date

7. To move the agenda forward in a positive direction, and to achieve common objectives, the Strategic Planning Group has established two operational groups:
 - Schools
 - Early Years and Childcare

These groups are taking forward specific tasks relating to the development of guidance and information to support schools and other providers and to ensure a cohesive link to the development of services through Extended Schools.

The work, to date, of the operational groups in conjunction with the Early Years and Childcare Service, has resulted in the following actions:

- A meeting to share information has been held, covering topics such as, governance, legal and financial issues. 4S are developing a programme of advice to schools on these issues and will also include Human Resources.
 - An event to launch the Children's Centre programme planned for 12 June 2006. This will provide additional information on developing services in Children's Centres and all current partners identified to deliver a centre have been invited.
 - Four geographical area network and information sharing events are being planned for schools in the summer or autumn terms.
8. The Strategy Group assessed all Business Plans against applications at the panel meeting on 10 February 2006. Appendix 3 provides details of the schools and childcare providers that are working in partnership to deliver children's centres in each of the areas. Appendix 2 is attached to act as a reference to the location of the areas on a map of Surrey.

Capital planning

9. Twenty-one site viability visits to schools and three to other providers have been carried out in conjunction with NPS (commissioned consultants), the Education Planning team and representatives from the Early Years and Childcare Service. Work is currently being undertaken by Surrey County Council's Quantity Surveyor to profile the costs of the capital programme.

As part of the capital costings exercise, ten schools were initially visited by NPS and representatives from the Education Planning Team. Due to the high estimated costs given in relation to this, it was decided that action needed to be taken. Re-scoping visits have now been undertaken along with a number of visits to other sites and the final costings are due at the end of May.

There is some flexibility in relation to the overall Capital Funding received from the DfES SureStart Unit and to this end the Early Years and Childcare Service and the Strategy Group are looking creatively as to ways in which to best maximise the available resources.

Other developments:

10. The Early Years and Childcare Service – Children's Centre and Extended Schools team has:
- Developed a Children's Centre and Business Planning guidance document.
 - Completed all SureStart database entries, meeting the DfES deadline of mid March.
 - Identified schools and / or other providers in fourteen areas where no applications were originally received.
 - Currently investigating alternative options, including mobile provision in the seven rural areas. Appendix 3 indicates which of the areas are designated as rural.
 - Reached agreement with the SureStart regional team to consider whether there are any centres that can be designated within the next three months, including Beaufort School (area 4) and the National Centre for Young People with Epilepsy (area 33).

What are the choices facing the authority in implementing the programme

11. The choices remain unchanged from those set out in the paper considered by the Executive on 23 January 2006. The target from the DfES SureStart Unit to develop 46 Children's Centres, with a reach of 36,888 children, also remains unchanged.

The regional SureStart team has acknowledged the progress made in phase 2, confirming this in a letter dated 5 May 2006, which contains the following paragraph

'Surrey have made good progress to date in terms of identifying the centres for development, particularly in light of their high target. There is currently no information on the EC Harris website for capital projects and Surrey need to focus on developing and uploading the larger capital projects to ensure the March 2008 deadline is met. Surrey's current plan reaches 36,795 against a target of 36,888, however Phase 1 reach was surpassed and therefore this is not an issue.'

Progress to date by area

12. Significant work has been undertaken to ensure that we work effectively towards achieving outcomes in line with target and the following progress has been made to date:

• Areas progressing with a Business Plan developed	19
• Areas where work is being undertaken with potential providers	13
• Areas where there are no identified options at this stage	8
• Areas awaiting the outcome of schools reviews	6

Appendix 1 provides details of the locations of these areas.

The Children's Centre and Extended Schools Team continue to work closely with partners and key stakeholders to identify potential sites within the 14 areas where it has not been possible to identify a potential site for a Children's Centre.

Financial implications

13. The original budget allocation for the creation of the 46 centres consisted of:

- £8 million capital
- £6.8 million revenue
- £346,633 rural uplift

This funding is made available as a grant from the DfES SureStart Unit, over the period from April 2006 to March 2008, and the childcare will be funded from charges made to parents.

14. Revised Allocation

An increase has been made for the 2007/2008 period in respect of the Main Revenue funding for the SureStart Children's Centres, which adds the following amount to the overall revenue budget:

- £1,464,169

Based on identification of locality, size and needs of the individual centres, a calculation, in line with the overall budget, will be made to ensure appropriate allocations of both capital and revenue funding.

A clear requirement will be made to ensure that all centres are developed within a defined and agreed budget. This will be challenging, as the allocation by the DfES is tight for this number of centres. Officers are working on strategies to manage the financial risks involved for both capital and revenue funding.

Whilst there are no concerns over the apportionment of Revenue funding, there still remains some anxiety over the level of Capital funding being dedicated to this project as being sufficient to meet the possible building works required to deliver the 46 centres.

15. A number of measures are in place, which have led in part to the delay in entering Capital information onto the website as detailed in section 11 of this document and referred to in the letter from the regional SureStart team. These measures are as follows:
 - re-scoping of a number of the proposals to scale down the initial plans in order to reduce costs
 - no decisions will be taken on full core offer centres until the full cost of the whole programme has been established
 - a meeting has been arranged with the SureStart regional team to discuss emerging concerns of the capital cost of the programme
 - the SureStart regional team has agreed to a re-assessment of the availability of childcare places in the existing areas requiring a full core centre. This may identify that there are sufficient childcare places such that the childcare element of the core offer will not be required to be included in the centre and thereby reduce costs
 - the SureStart regional team has agreed that in Children Centre areas where the number of children living in 30% deprivation is less than 40% of the total number of children in the area, the local authority can consider a graduated model. However, the caveat to this is that the local authority will need to ensure that these children have access to all services as for a full core offer centre and/or are specifically targeted with services. A review of all the areas is being undertaken to ascertain the impact of this agreement on the programme.

16. A meeting was scheduled for 8 June 2006 to discuss the capital pressures with the Regional SureStart team. Information will be available for this meeting on the likely cost of the programme and in the likelihood that there will be a shortfall in the funding that is available, the meeting will consider the following options:
 - a reduction in the target of children centres
 - a reduction in the number of full core offer centres that are required – as these are the most costly to provide
 - additional capital funding is allocated by the DfES to meet the shortfall

17. Despite the difficulties with establishing the capital costs of elements of the programme, considerable progress has been made in developing the plans for many of the children centre sites. Partnership working with schools, private providers and others has been very successful and it will be possible to move forward more quickly when the overall cost of the programme has been identified.

18. The Children and Families Select Committee discussed the paper at its meeting on 31 May. Members noted:

- concerns at the lack of Member consultation in the process, but were assured that the intention was to involve them together with District and Borough Members during the consultation on service provision from each Centre when the identification of the sites had been finalised
- concerns on the equitability of the funding process by the DfES and noted that this would be part of the discussion with the DfES SureStart regional team on 8 June
- the tribute paid to the schools involved in the process and that a number of centres had been identified for early designation

Equalities Implications

19. All Children Centres will be designed to meet the needs of ethnic minority communities within their catchment areas. Provision for children with additional and special educational needs is also a core component of the service provision. The consultation process for each centre will identify the needs in each area and centres will be required to deliver services to meet the identified need. Many centres will be attached to schools and will therefore be in a position to draw on the expertise and support that is provide within the school and from support in the Children’s Service and the Early Years and Childcare Service.

Financial and Risk Management

20. The report sets the financial and management risks and the action that is being taken in paragraphs 13 to 16. The outcome of the meeting with the DfES Regional Office will need to be given to the Executive on 20 of June as the outcome is not known at the time of submitting the report. The development of Children’s Centres will be carried out within the allocated budget from the DfES through the Sure Start Grants and a risk management approach has been taken to identify the potential cost of the programme and to take appropriate action to achieve the targets within available resources.

RECOMMENDATIONS:

It is recommended that the Executive:

- (1) notes the measures that have been put in place for taking forward this programme.
- (2) supports the action that is being taken to discuss a range of options with the DfES SureStart regional team.
- (3) agrees for the Early Years and Childcare Service and Strategy group to continue taking the programme in line with the strategic plan to create the 46 Children’s Centres across the County, to ensure that the given timescales and deadlines are met.

REASONS FOR RECOMMENDATIONS:

The implementation of the strategy for delivering the Children’s Centres needs to move forward to ensure deadlines are met for the allocation of the funding from the DfES SureStart Unit.

WHAT HAPPENS NEXT:

The next steps in the programme will include:

- Meeting to be held with the Regional SureStart team – 8th of June 2006, to discuss the capital funding issues
- Completion of the capital and revenue profile.
- Memorandum of Understanding or Contract agreed and signed for the Children's Centres planned for early designation.
- Needs analysis and consultation in rural children's centre areas, to assess the level of mobile provision required.
- Continued support to schools and other providers to develop the children's centre service elements of the full core offer graduated model and project plans

Responsible: Mel Shires, Head of Childcare and Family Support Services, Early Years and Childcare Services

Accountable: Phil Osborne, Head of Early Years and Childcare Services

Consulted: Children and Families Select Committee
Executive Member for Schools, Children and Youth Services

Informed: Ashley Ayre, Acting Executive Director for Children and Young People
Early Years Development and Childcare Partnership

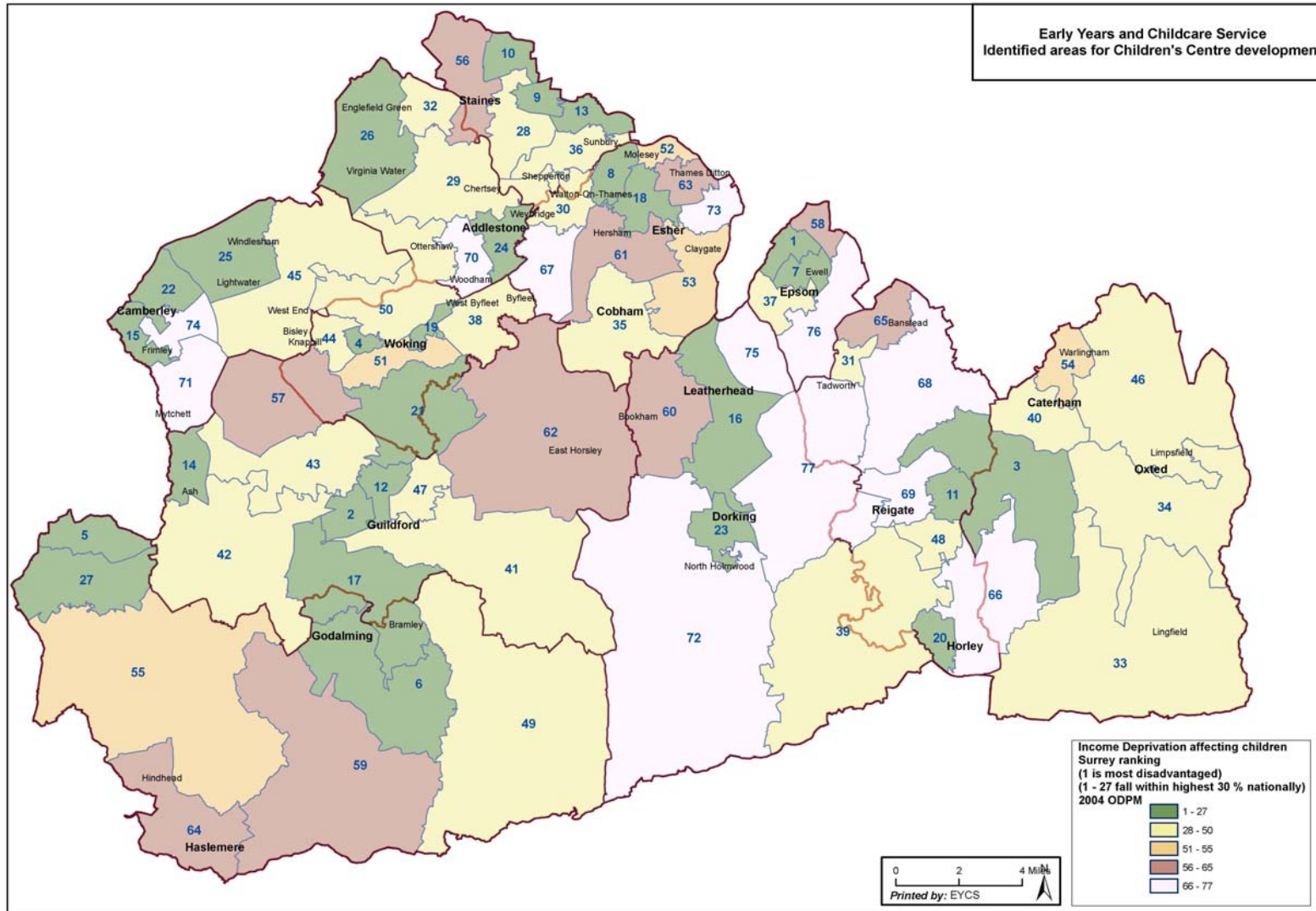
Background papers: Report to the Executive, 23 January 2006

Appendix 1.
Progress to date by area. 05.06.

Areas progressing with business plan developed	Areas where we are working with potential schools/providers	Areas with no identified options at this stage	Areas awaiting outcome of school reviews	Phase 1 Children's Centres
1 – Ewell Court & Ruxley	7 – Ewell - PVI	11 – Redhill	13 – Sunbury North (Spelthorne)	12 – Guildford Stoke
2 – Guildford Westborough	8 – Walton North - School	18 – Walton Ambleside	15 - Frimley	16 - Leatherhead
3 - Nutfield & Bletchingly	9 – Ashford – school & PVI partnership	25 – Lightwater & Bagshot	21 – Mayford & Send (Woking)	19 – Maybury & Sheerwater
4 – Goldsworth Park	27 – Farnham Central –college	26 – Virginia Water & Englefield Green	22 – Camberley North (Old Dean)	31 - Preston
5 – Farnham Hale	34 – Oxted - school	30 - Weybridge	24 – Addlestone & New Haw	
6 – Godalming & Busbridge	36 – Sunbury South - school	35 - Cobham	29 – Chertsey & Thorpe	
10 – Stanwell	39 – Leigh & Charlwood - school	44 - Knaphill		
14 – Ash	40 – Caterham - school	45 – West End & Chobham		
17 - Godalming, Binscombe, Shalford	41 – Guildford Tillingbourne - school			
20 - Horley West	43 – Worplesdon - school			
23 – Dorking	47 – Burpham & Merrow - school			
28 – Staines South	49 – Cranleigh - PVI			
32 – Egham	50 – Horsell & Ottershaw - School			
33 – Burstow, Lingfield, Dormansland				
37 – Epsom				
38 – Pyrford & Byfleet				
42 – Tongham & The Pilgrims				
46 – Hamsey, Warlingham & Tatsfield				
48 – Meadvale & Earlswood				
Total 19 areas	Total 13 areas	Total 8 areas	Total 6 areas	Total 4 areas

***PVI – private, voluntary or independent provider**

Appendix 2 – for reference



Appendix 3 - Children's Centres by Area

Area Number	Area Name	School Name	Childcare provider that has a joint application with school	Area of surrey
1	Ewell Court and Ruxley	Riverview C of E Primary & Nursery School	Heron Court Day Nursery	North east
2	Guildford, Westborough	Guildford Grove Primary School	no	South West
3 rural	Nutfield/Bletchingley	Furzeffield School	Jelly Beans	South East
4	Goldsworth Park	Beaufort Community Primary School	Wayside, c/o Beaufort Primary School, Kirkland Avenue, Goldsworth Park, Woking GU21 3RG	North West
5	Farnham Hale	Hale School	Major Minors	South West
6	Godalming and Busbridge	Wharf Nursery School	School management	South West
7	Ewell	Hollymoor Lane development	no	North east
8	Walton North	Grovelands Infant and Nursery school	no	North east
9	Ashford	Unsuccessful application		North east
10	Stanwell, Spelthorne	Stanwell Fields Primary School Town Farm Primary School Christ the King Primary School	Minitots Day Nursery	North east
11	Redhill	no applications for this area.		South East

12	Guildford, Stoke	Guildford Children's Centre		South West
13	Sunbury North	no applications for this area.	no	North East
14	Ash	Ash Grange School	School management	South West
15	Frimley	Frimley Children's Centre	The Ark Nursery Mytchett	North West
		The Watchetts Junior School	No	North West
16	Leatherhead	Leatherhead Children Centre		South East
17	Godalming, Binscombe & Shalford	Loseley Fields Primary School	School management	South West
18	Walton Ambleside	No application for this area		North East
19	Maybury & Sheerwater	Woking NNI	Caring Day Care	North West
20	Horley West	Meath Green Infant School	Horley Community Pre-school	South East
21	Mayford and Send			North West
22	Camberley North	Lorraine School and Nursery	School management	North West
22	Camberley North	Pine Ridge Infant and Nursery School	Little Acorns, Camberley	North West
23	Dorking	Dorking Nursery School	School management	South East
24	Addlestone	Darley Dene Infant, Nursery and special needs cluster	School management	North West
24	Addlestone and New Haw	Sayes Court Junior	no	North West

25	Lightwater and Bagshot	Bagshot Infant School	Bagshot Community Pre-school and Bagshot Pre-school	North West
26	Virginia Water & Englefiels Green	no schools identified in this area.	no	North West
27	Farnham Central		Application declined	South West
28	Staines South	Buckland Infant School	Scallywags Nursery	North East
29	Chertsey and Thorpe	Chertsey Nursery School Pycroft Grange Primary School		North West
30	Weybridge	no school identified in area		North east
31	Preston	Epsom Downs Children's Centre		South East
32	Egham	Hythe Community Primary School	Springtime	North West
33 rural	Burstow, Lingfield & Dormansland	National Voluntary Organisation - The National Centre for Young People with Epilepsy	The Stables Nursery	South East
34 rural	Oxted	no applications for this area		South East
35	Cobham	no applications for this area.		North east
36	Sunbury South	Application requiring further investigation. Saxon Primary School	n/a	North east
37	Epsom	EEMS PCT	EEMS PCT run childcare	North East
38	Pyrford & Byfleet	Pyrford Church of England Primary School	Flying Start Nursery	North West
39 rural	Leigh & Charlwood	no applications for this area		South East
40	Caterham	No application for this area		South East

41 rural	Guildford, Tillingbourne	no applications for this area	n/a	South West
42 rural	Tongham and The Pilgrims	St Paul's C of E Infant School	Tongham Tots	South West
43	Worplesdon	no applications for this area	n/a	South West
44	Knaphill	St John's Primary School	Charlwood House Day Nursery	North West
45	West End and Cobham	no application for this area		North West
46	Hamsey, Warlingham, and Tatsfield	Application not successful		South East
47	Burpham & Merrow	no application for this area	n/a	South West
48	Meadvale and Earlswood	Earlswood Infant and Nursery School	Tiddlywinks Day Nursery	South East
49 rural	Cranleigh	no applications for this area	n/a	South West
50	Horsell and Ottershaw	no application for this area		North West